

Department of Transportation

# COMMUTER ALERT

19-180

Maintenance

Date: Monday, May 13, 2019

District: 8 – Riverside/San Bernardino

Contact: Shane Massoud

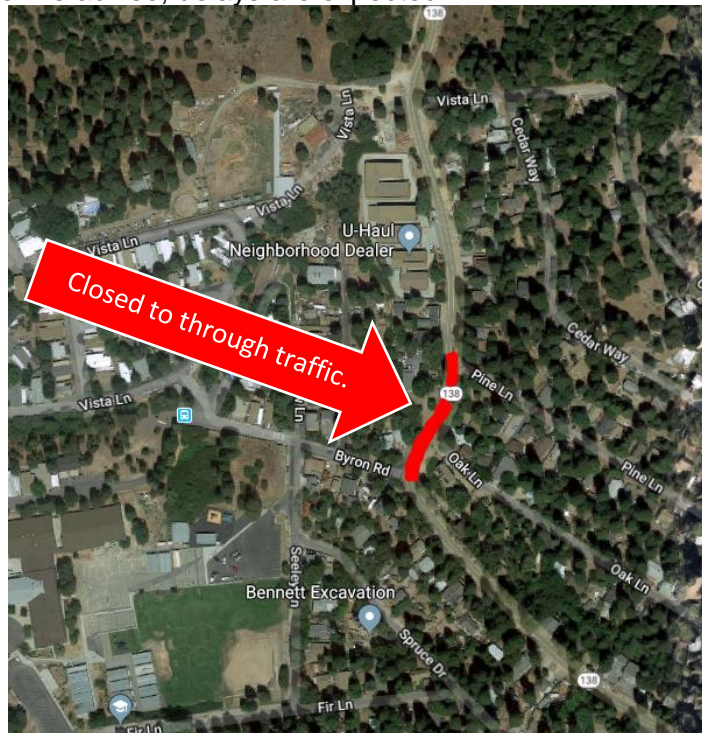
Email: [shane.massoud@dot.ca.gov](mailto:shane.massoud@dot.ca.gov)

Phone: (909) 383-4416

FOR IMMEDIATE RELEASE:

## EMERGENCY CLOSURE ON STATE ROUTE 138 IN CRESTLINE

**SAN BERNARDINO** – The California Department of Transportation (Caltrans) Maintenance crews will be closing State Route 138 (SR-138) in Crestline from Byron Rd. to Pine Lane for emergency drainage repairs. For 24 hours each day, through traffic will not be permitted during this operation. All traffic will be detoured to Old Mill Rd. The work will start Monday, May 20 at 8:30 a.m. and is anticipated to be complete Thursday, May 23. Please remember to reduce your speed as you approach the work zone. Be advise, delays are expected.



**Know before you go!** To stay on top of roadwork in the Inland Empire go to [www.caltrans8.info](http://www.caltrans8.info) and sign up for commuter alerts. View traffic conditions at <http://quickmap.dot.ca.gov> and lane closures at <https://lcswebreports.dot.ca.gov>.



**BE WORK ZONE ALERT**

