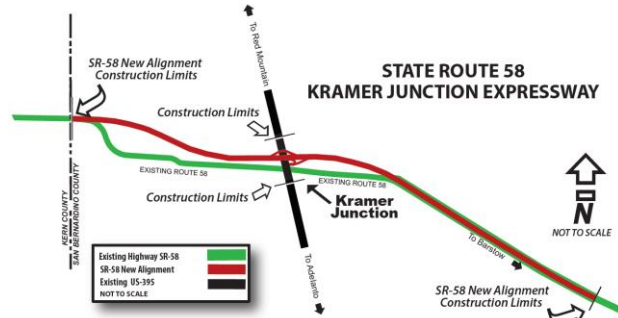


# COMMUTER ALERT

18-120  
34770

Date: Thursday, July 5, 2018  
District: 8 – Riverside/San Bernardino  
Contact: [Tyeisha.prunty@dot.ca.gov](mailto:Tyeisha.prunty@dot.ca.gov)  
Phone: (909) 383-4631



FOR IMMEDIATE RELEASE

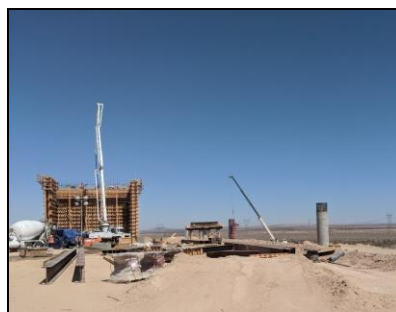
## STATE ROUTE 58 KRAMER JUNCTION EXPRESSWAY PROJECT

**SAN BERNARDINO** – The California Department of Transportation (Caltrans) continues work on the estimated \$191 million State Route 58 (SR-58) Kramer Junction Expressway Project. The project re-aligns and widens 13 miles of SR-58, builds a new SR-58/US-395 Interchange, and one railroad grade separation. The purpose of the project is to accommodate increased volumes of oversized vehicles, reduce traffic congestion, improve reliability of good movement, extend pavement life, and improve operational efficiency.

The project is still in the early stages, as crews continue to work on clearing and grubbing (earthwork), utility relocations, environmental protection fence installations, and Railroad overhead bridge column installations. Currently the project is approximately 20% complete.

Majority of construction activity continues to be away from the current SR-58 Expressway. However, Caltrans asks that motorists be aware of the work and ***SLOW FOR THE CONE ZONE.***

For additional project information visit: <http://www.dot.ca.gov/dist8/Project-SR-58-Kramer-Junction-Expressway.html>



***Know before you go!*** To stay on top of roadwork in the Inland Empire go to [www.caltrans8.info](http://www.caltrans8.info) and sign up for commuter alerts. View traffic conditions at <http://quickmap.dot.ca.gov>.

###